

Industrial Lighting Device

ACCIAIO
Beghelli

Beghelli

A lifelong material for the luminaries of the future

Steel has come together in the development of a new technology of high resistance to pressure, high temperature, strength from atmospheric and corrosion agents . Only few other materials can be moulded in such many different shapes without losing their characteristics of high resistance to external stress. Beghelli has decided to use this material to forge the light fixture of the future without any compromise to the life of the product. Thanks to new technologies on steel manufacturing process, this ultimate luminary is as light as a traditional plastic fixture.

Acciaio Beghelli, exceptionally on top of its class in mechanical and lighting solutions, offers innovative – fast and easy installation solutions.

A fully recyclable material

Steel is a “green” totally recyclable material. All products made of steel can be re-used again and again for an endless number of times. The evidence of this is represented by 300 million of tons of steel recycled every year equal to 35% of the world steel production; steel is the most recycled material in the world. The characteristic of perpetual recycling of the “steel product” is one of the best ecological property of the steel industry; its production cycles are the closest to the concept of sustainable development. Development of steel as compatible with the environment is possible due to the total recyclability of its products, the high percentage of re-use and recovery of its spin-off and the respect of the regulation in the environment field.

ACCIAIO®
Beghelli



Higher
Light output
Higher Energy savings

Metalized parabolic reflector designed to optimize the light output on the floor

5.1kg: the lightest 2x58 waterproof fitting on the market

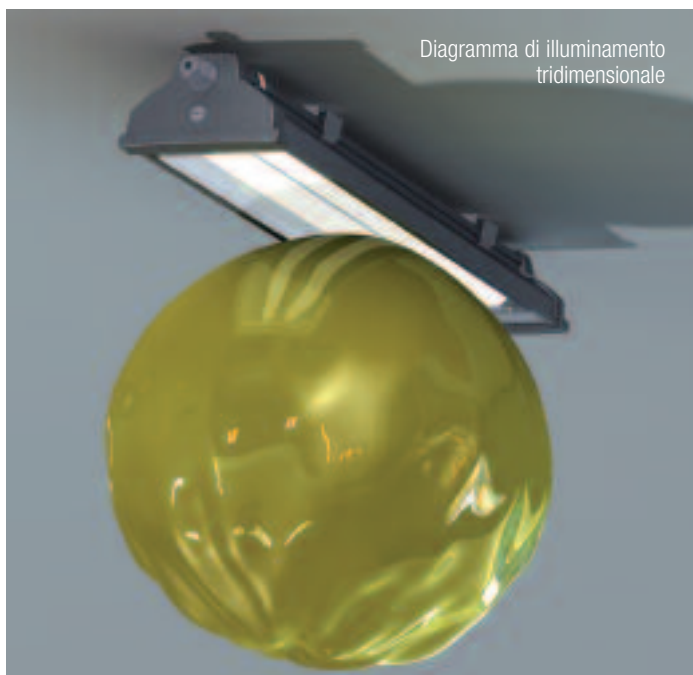


Acciaio Beghelli® is the Beghelli answer to the demand of products at high technical contents for heavy duty applications. The steel body and the end caps in die-cast aluminum have a high resistance to aggressive chemical agents. In the industrial application this product has a perfect place in all installations: ceiling, wall, suspension and electrified bar .

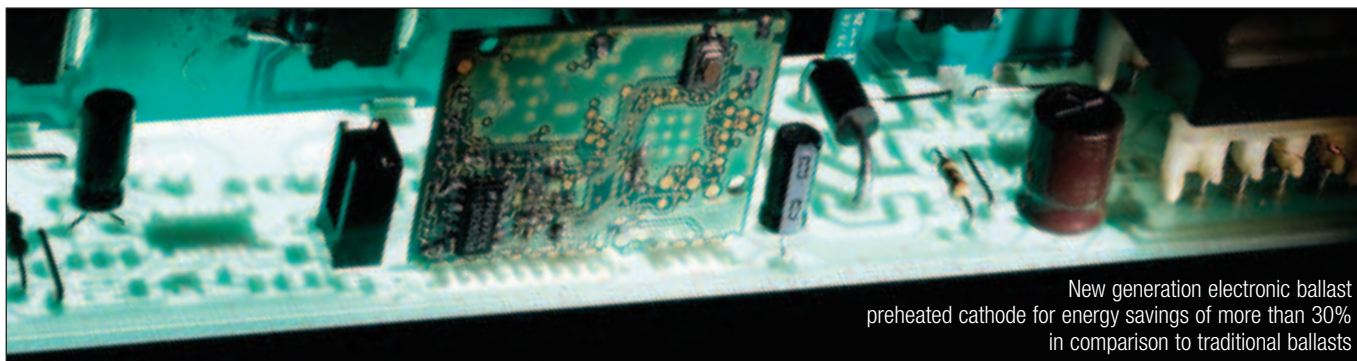
Light output higher than 20% compared to traditional luminaries

The development of the optical reflector of Acciao Beghelli is focused to high lighting efficiency with a dual goal: to obtain the maximum light level on the working place with low consumption and to reduce the number of the luminaries installed in the same area. The reflector designed for the Acciao Beghelli conforms to both goals granting a light efficiency higher than 70%. All the reflectors of Acciao Beghelli range have lighting performances which are at the top of their category.

From a laboratory comparative test, the lighting level on the ground is at least 20% higher than other waterproof luminaries available on the market.



Very high energy savings: up to 30%



Technical features/electronic ballast 2x58W

Energy classification EEI	A2	Designed and manufactured to comply with	EN 60929
Light ignition	preheated cathodes	Number of switches on / off	40.000
Luminous flux, also when power voltage lower	constant	Maximum temperature of the Ballast (TC)	80°C
Flicker effect	none	Temperature operation	-25° ÷ 70°

CONSUMPTION DIFFERENCES

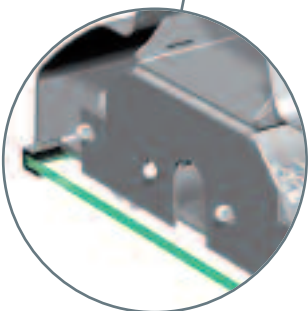
Magnetic ballast: 134 W

Electronic ballast: 105 W

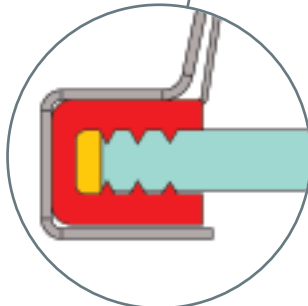
Beghelli Electronic ballast: 95 W

3 YEAR GUARANTEE

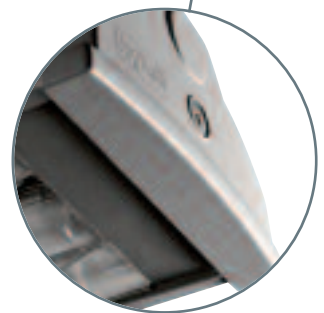
When rapidity
is money...
... you install **4** fittings
in the time of **1**



clear temperate glass cover
no toggles



silicon sealing for
IP66
degree of protection

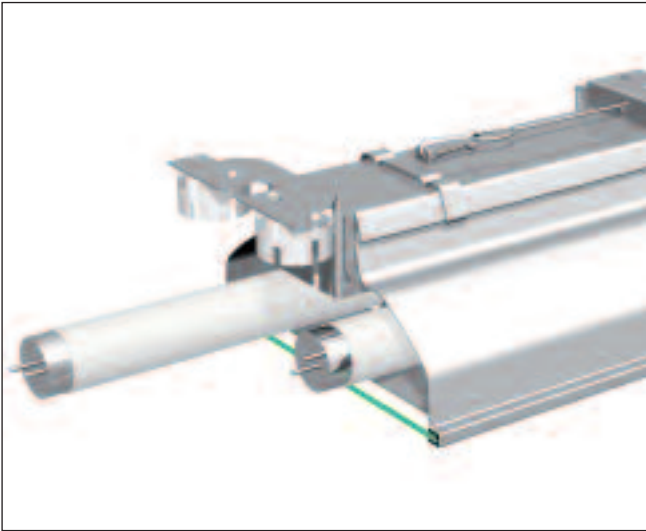


die-casting aluminium end-caps
for easy access to lamps
and components

Four steps in the time of 15 minutes

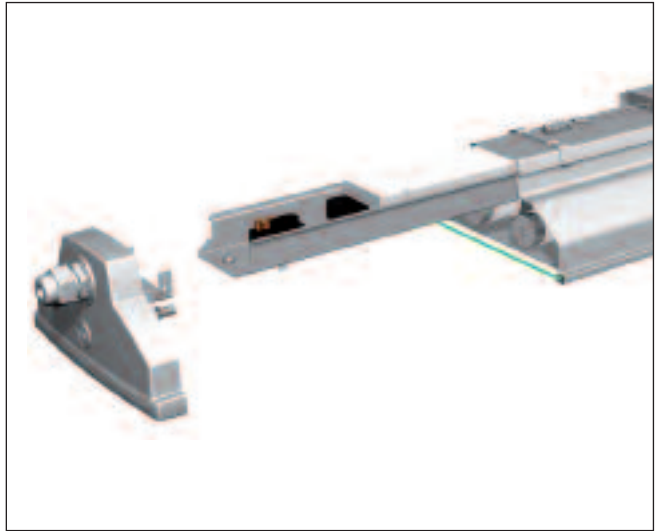
Acciaio Beghelli is a luminaire designed to ease all steps of installation, each component is designed to reduce the time required for the installation:

- all needed accessories are already mounted on the luminaire.
- No spare components are required (i.e. lampholder, cable gland and blanking grommets or others)
- No spare toggles, because the lens is sealed to the body



MOUNTING OF TUBES

The opening of the end-caps is simple and fast. The end-cap is fixed by a single screw. When the end-cap is open the correct positioning of tubes is granted by a guide rail.



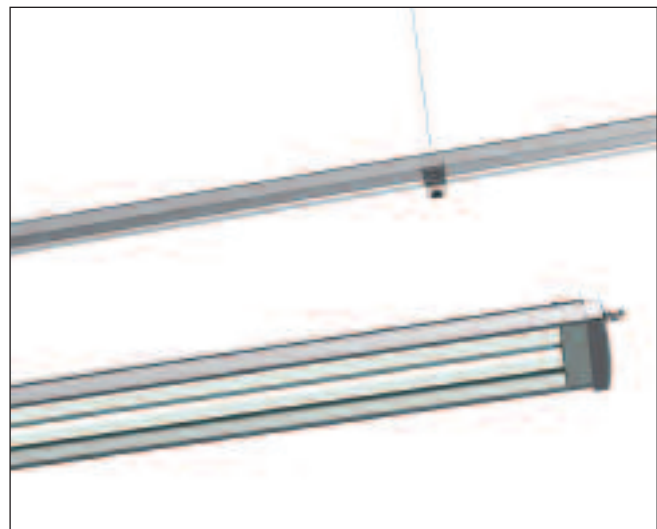
WIRING

Thanks to an extractable rail the installer has an easy access to the connector and electronic components. The extractable rail is locked by the end-cap once it is closed.



CLOSING OF THE END-CAP

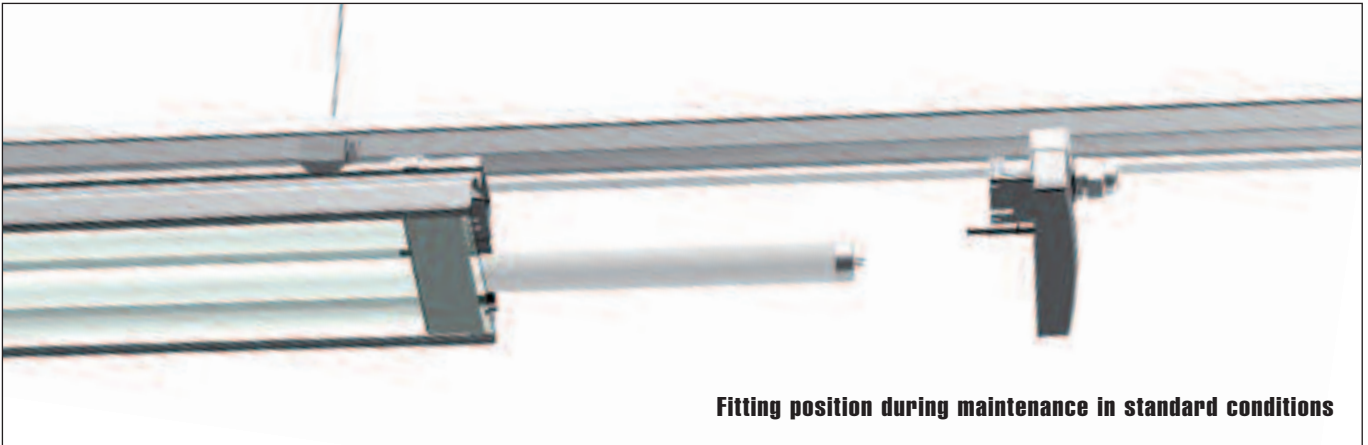
The closing of the end-cap is immediate. The self-positioning end-cap gets closed by a single central screw, which ensures the correct location and alignment. The silicon gasket grants IP65 degree of protection.



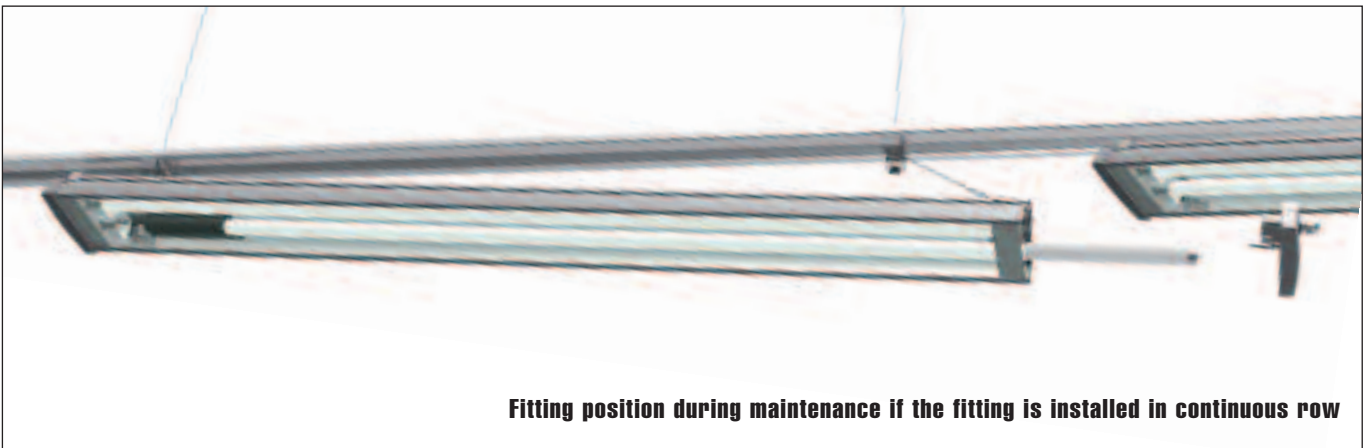
'SNAP-IN' INSTALLATION MECHANISM

The fixing brackets are another element that allow fast installation and maintenance. The brackets are mounted separately from the luminaire, and successively snapped into place due to a quick-lock internal system. The positioning of the brackets is easily accomplished with their sliding onto a longitudinal rail that allow them to move after they have been connected.

Fast maintenance



Fitting position during maintenance in standard conditions



Fitting position during maintenance if the fitting is installed in continuous row

THE INTELLIGENT MAINTENANCE OF A TOP LEVEL LUMINAIRE

Acciaio Beghelli design confirms the philosophy of our company to supply high quality products designed for state of the art installation and maintenance solutions

The rapid system of tubes replacement allows the installer to work with one single unlocking screw which allows the opening of the end-cap and replacing of the tubes. This simplicity is present also in the access to the connector and the electronic components that are mounted onto an extractable rail.

A SYSTEM THAT DOES NOT ADMIT INCONVENIENCES

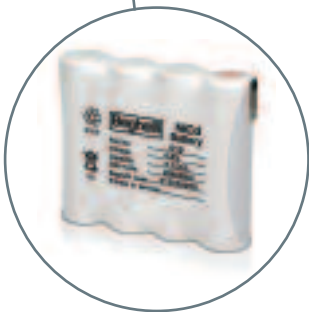
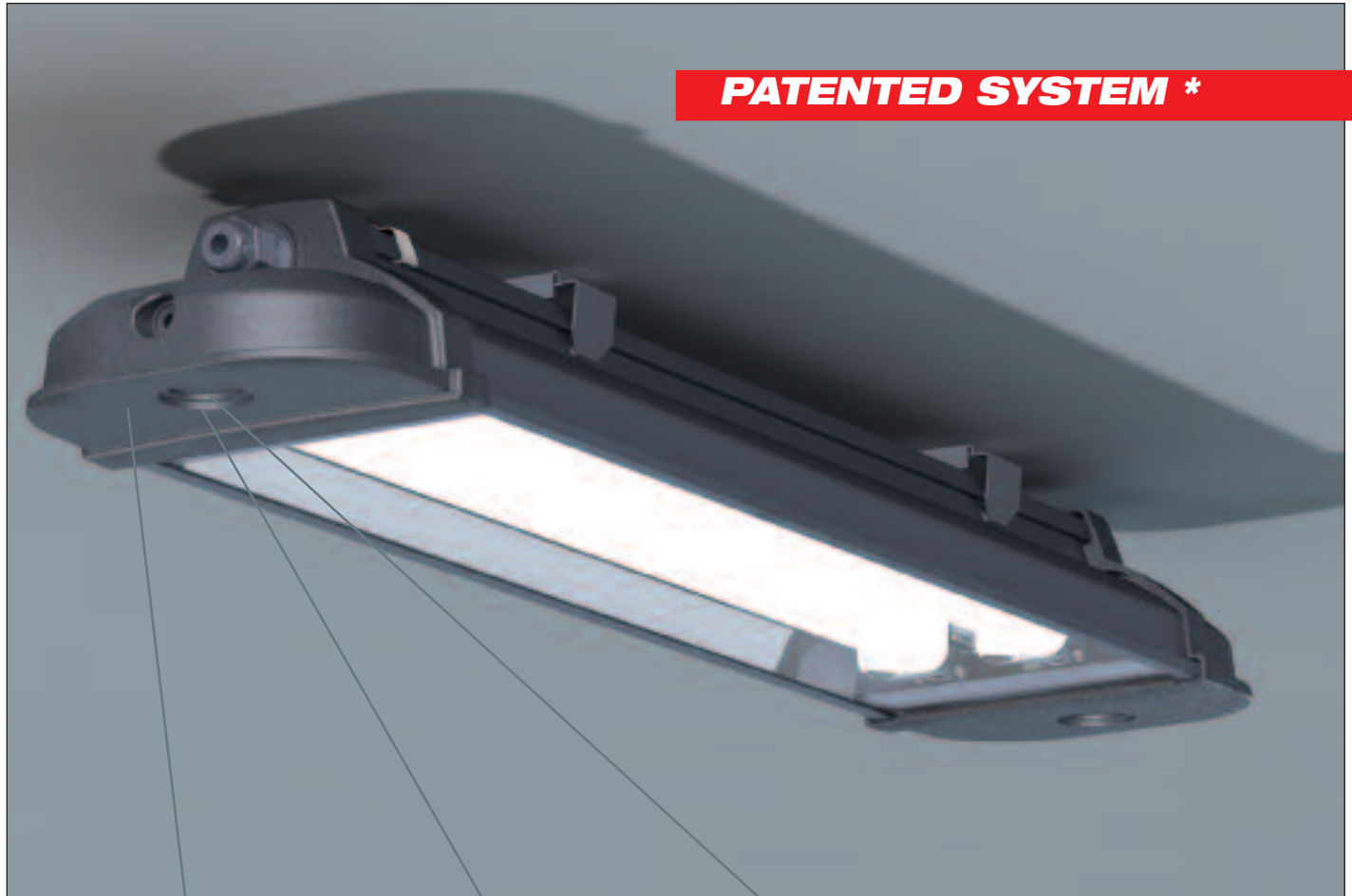
In the event that a higher lighting level is required, it may happen that the distance between two fittings is not enough to allow an easy replacement of the tube.

In this case remove the fast fixing bracket of the fitting on the side of extraction of the fluorescent tubes thus allows a controlled detachment by a security cable for an immediate replacement of the tubes.

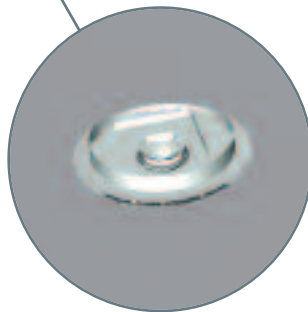
AN IP66 LUMINAIRE THAT WILL LAST FOR YEARS

The system to enter into the wiring space by removing the end heads allowing a really easy maintenance is also designed to grant the maximum resistance and to keep the IP66 degree for long.

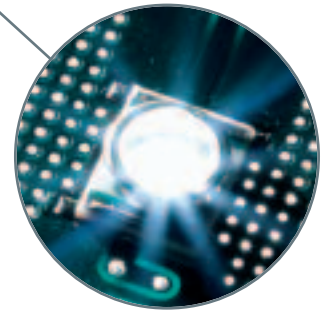
The versatility of emergency with LED



**Battery and inverter are located
into the end-cap thus avoiding
any operational heat issue**



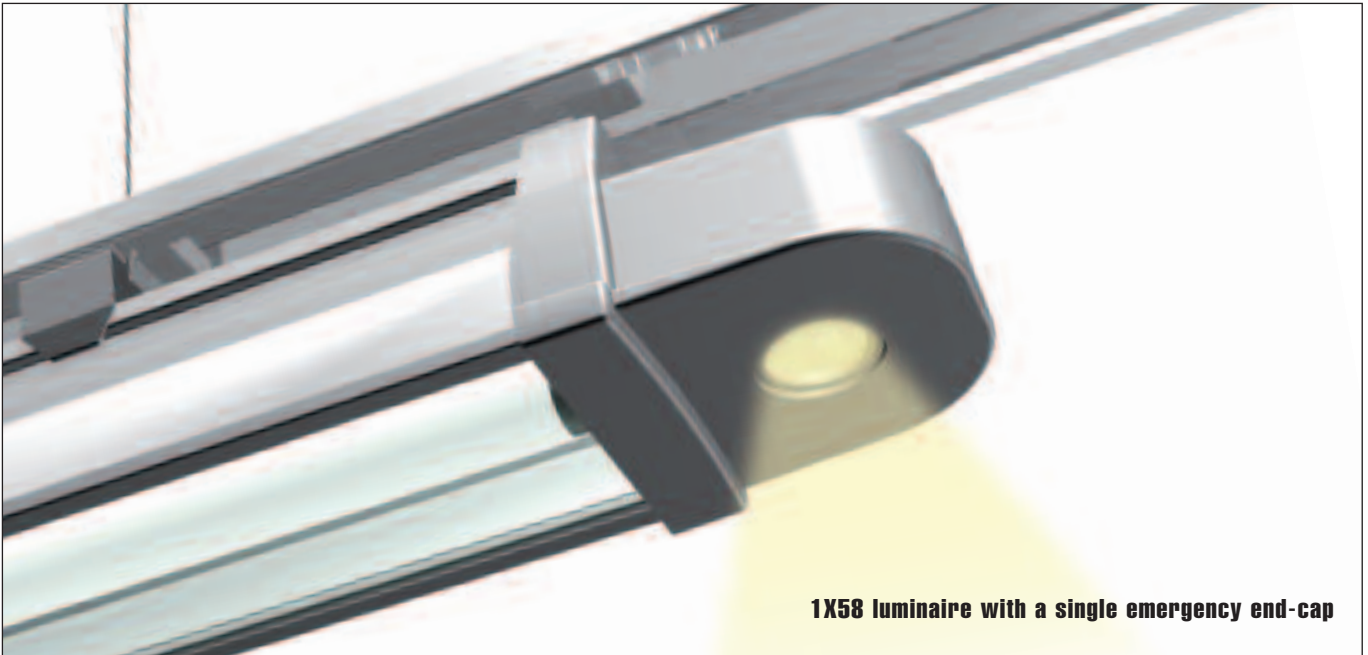
**Sophisticated optics
for a very high luminous
efficiency**



**Long life
high efficiency
1W LED**

* Patented requested

Energy savings and high reliability



1X58 luminaire with a single emergency end-cap

LED: LIGHT FOR THE FUTURE

Acciaio Beghelli combines all the advantages LED technology offers. The LED source has a very high efficiency and long life and the special optics maximize the light on the floor providing uniform light distribution

LONGER BATTERY LIFE

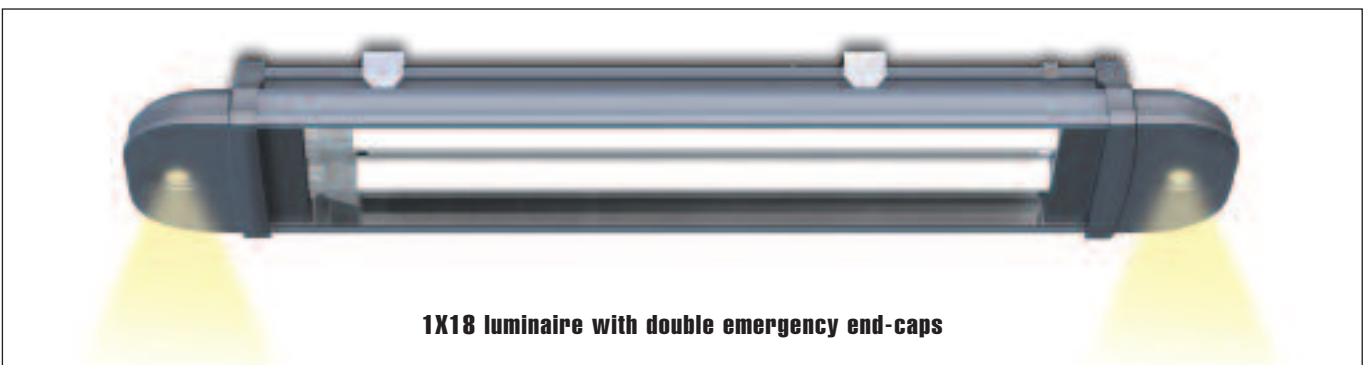
As the battery pack is located into the end-cap any operational heat issues is avoided and therefore the battery life is improved

ELECTRONIC CHECK ON THE BATTERY CHARGING

The innovative charging systems checks the battery charging level and reduces the power consumption once the battery has reached the full load.

INSTANT EMERGENCY ILLUMINATION FOR THE HIGHEST SAFETY

The LED source instantly lights up at the nominal output, differently from traditional fluorescent emergency luminaires that reach the nominal output after a minute from light up.

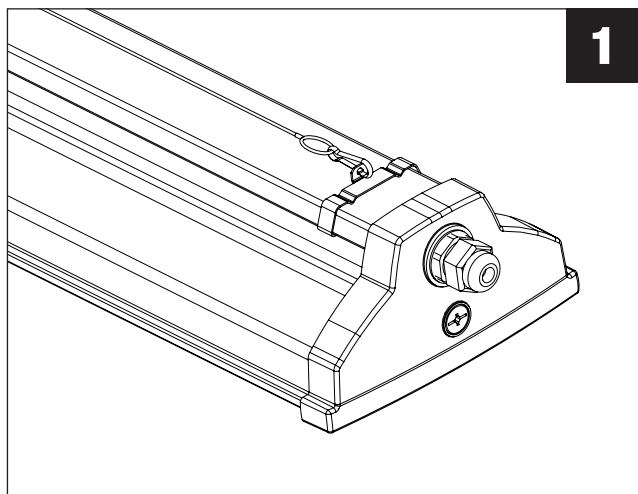


1X18 luminaire with double emergency end-caps

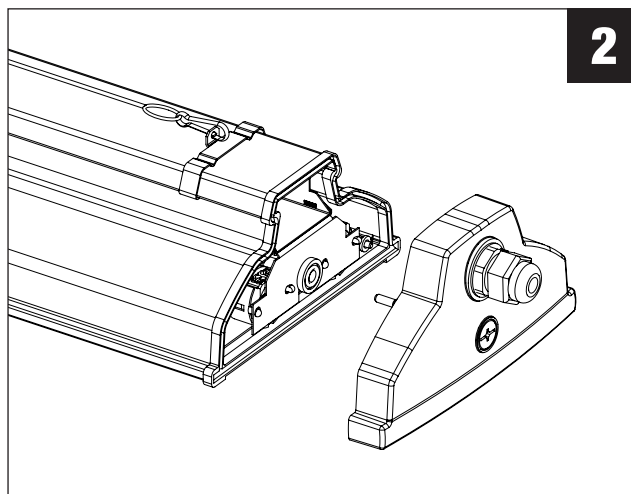
HIGH LIGHTING OUTPUT WITH TWO EMERGENCY END-CAPS

The versatility of this system allow to install two emergency end-caps on a single luminaire providing excellent performance of lighting output in conformity with relevant standards

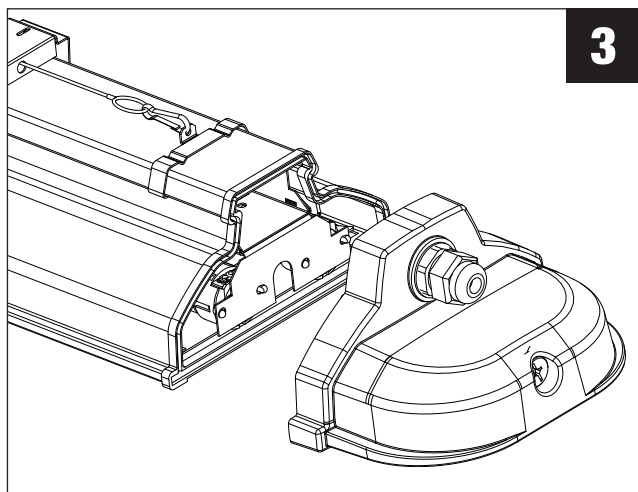
Design and technology for a wide versatility



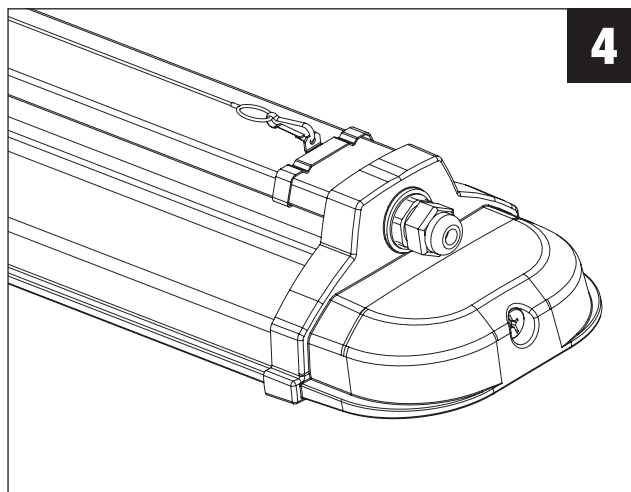
Standard luminaire



disassemble of the standard end-cap



replacing with the emergency end-cap



closing with central screw

INNOVATION AND DESIGN

The LED compact module is an innovative solution that revolutionises the traditional emergency concept of emergency inverters inside the fitting.

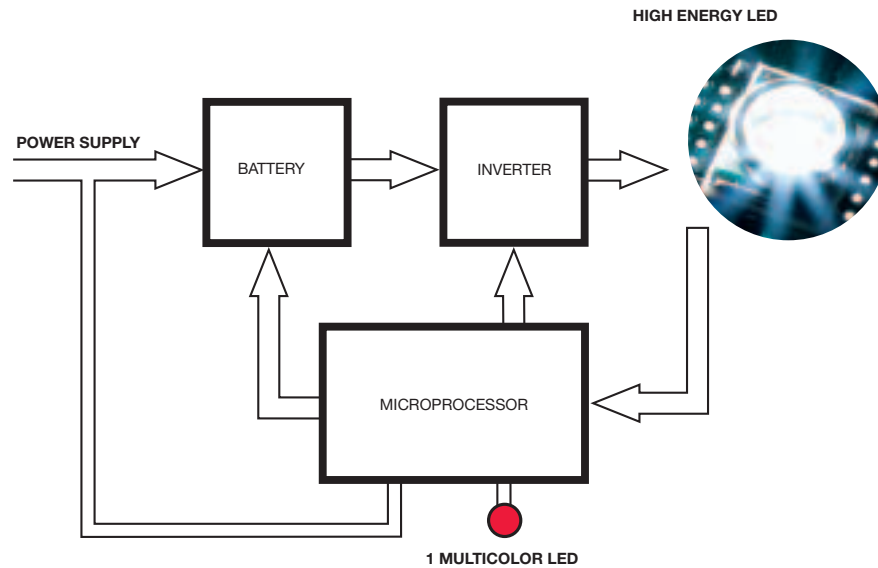
The discreet end-caps that incorporate the emergency module make the fitting suitable in installations where aesthetics and flexibility are important.

SIMPLICITY AND RAPIDITY: FOUR STEPS BY ACTING ONLY ON TWO SCREWS

The emergency module is applied by simply replacing the end-cap of the luminaire.

The emergency end-cap incorporates the optic and the battery. There is no need to modify the luminaire, therefore the installer can decide which luminaires should include the emergency module anytime.

The Autotest control and monitoring system



	RED 1 BLINKING	EMERGENCY FAILURE
	RED 2 BLINKINGS	FUNCTIONAL FAILURE
	RED 3 BLINKINGS	PCB FAILURE
	RED FIXED	FIXED DISCONNECTED OR DEFECTIVE BATTERY
	FLASHING YELLOW	EMERGENCY INHIBITION
	GREEN	NORMAL OPERATION
	FLASHING GREEN	BATTERY IS CHARGING

A SYSTEM THAT SIMPLIFIES THE PROCEDURES REQUIRED BY THE UN11222 REGULATIONS

A requirement foreseen by the 81/08 decree, the new regulation on safety on working places, is to regularly monitor the safety installations. Following these requirements our 626 AUTOTEST systems ensure both emergency and functional testing of the emergency lighting.

An integrated test functionality automatically executes function tests and duration tests. The emergency test is carried out every 26 weeks, the functional test (checking lamp, battery and switching to battery mode) is carried out every 28 days. A multicolour LED signals test results.

The centralized monitoring system provides monitoring of an unlimited number of units, generating savings on maintenance and personnel costs.

RECHARGING WITH ELECTRONIC TESTING FOR ENERGY SAVINGS AND DOUBLE BATTERY LIFE

The continuous battery charging of the emergency luminaire reduces energy consumption.

Beghelli has always focused on energy savings and environmental aspects; the newly designed charging system works by fully charging the battery in 12 hours, and by switching into a maintenance charging mode that reduces the power absorption to less than 1 watt.

This system significantly reduces energy consumption, overheating and battery stress, and grants a longer doubled battery life.

Logica: a centralized multifunction system

LOGICA ENABLES TO AUTOMATIZE THE TESTING PROCEDURES REQUIRED BY UNI 11222 NORM

Logica ensures the testing of the emergency lighting system according to several local and national regulations, and specifically according to 11222 Norm that specifies the rules for periodical testing, maintenance, and revision of emergency luminaires.



Logica central console cod. 12100

- Modular system
- Luminaires fit both auto-test and central-test
- Programmable Test duration (1h or 3h)
- Deferred Test applicable to subset of the plant
- Connection via cable (LOGICA) or radio (LOGICA FM)
- LOGICA Control Unit can control and monitor exit signs, emergency luminaires, and power packs with the LOGICA interface or general lighting luminaires with the DALI interface.
- Optional monitoring from a remote PC via data or GSM network
- Possibility to integrate the system into a Building automation
- No manual addressing at luminaires or devices required
- 16 programmable control groups
- 16 programmable control scenarios
- Power packs fit:
 - Incandescent lamps
 - Halogen lamps with electronic or magnetic transformers
 - Fluorescent tubes with electronic or magnetic ballast

LOGICA CENTRAL MONITORING WIRED SYSTEM WITH THE LOGICA SUPERVISOR UNIT (up to 4096 devices)

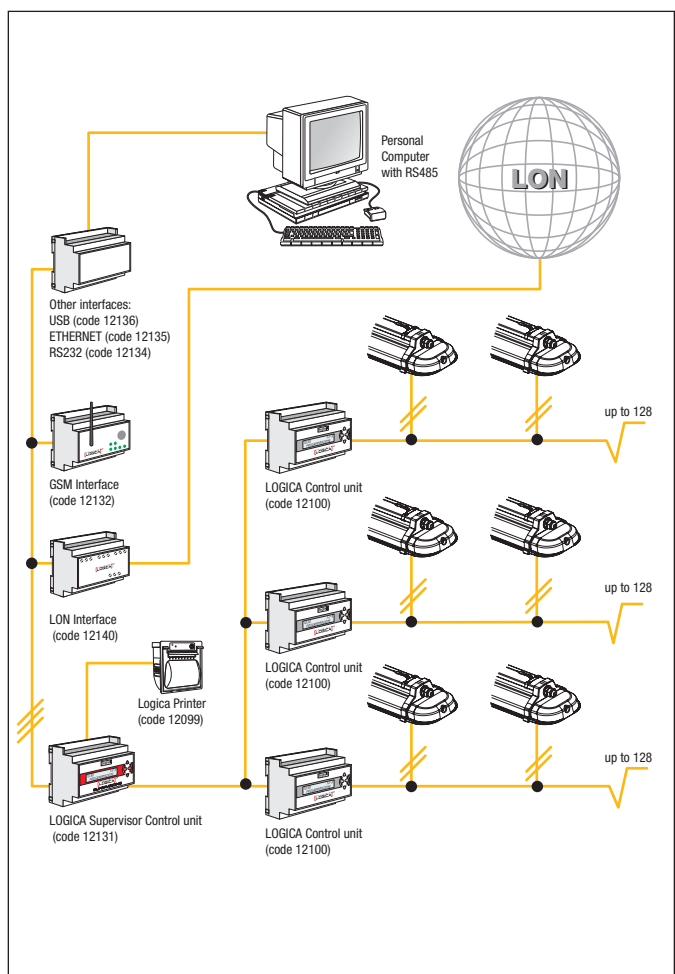
For centralised monitoring and control in large scale objects, it is possible to connect up to 32 LOGICA Control Units with a LOGICA Supervisor Unit leading to a maximum centralisation of 4096 emergency luminaires and luminaires with a DALI interface. LOGICA Supervisor Control Units can be connected to a local or remote PC. The LOGICA Supervisor control unit allows to perform the following additional activities:

- program and central monitoring of all connected remote control units
- remote printing of test and other reports
- all test reports both functional and autonomy are stored for two years

CENTRALTEST LOGICA WIRED SYSTEM (up to 128 devices)

LOGICA Control Unit can also be used to control the luminaires of the general lighting installation featuring a DALI interface. A maximum of 128 emergency luminaires, exit signs, power packs and luminaires with a DALI interface can be connected to a single LOGICA Control Unit.

The number of LOGICA control units that can be connected to a PC is unlimited, therefore this system allow to monitor and control several devices from a remote single place.



LOGICA FM: central monitoring system via radio

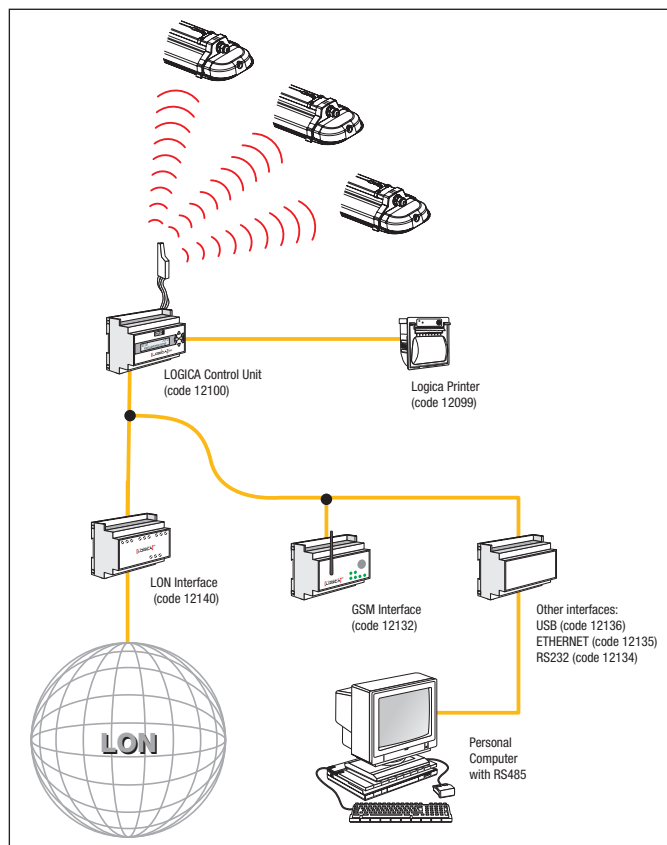
LOGICA FM: THE CENTRAL MONITORING SYSTEM VIA RADIO (up to 992 devices)

A Logica FM control unit monitor and control Logica FM emergency luminaires. Several Logica FM control units can be monitored and controlled by a single remote PC.

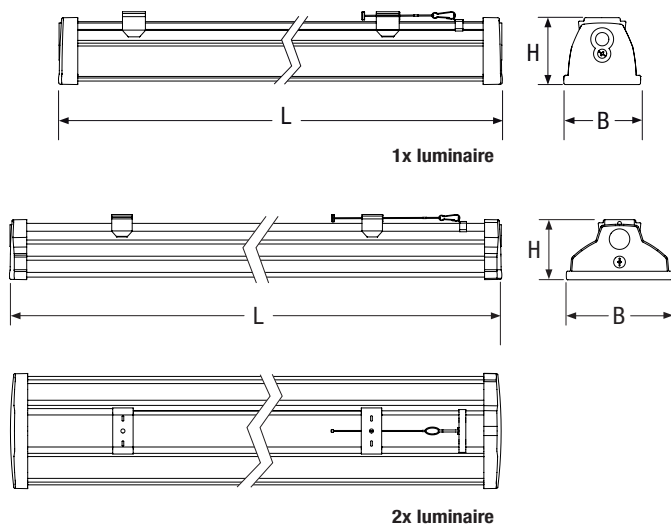
LOW-POWER SPREAD-SPECTRUM RADIO WAVE COMMUNICATION

The radio waves used by Logica FM System are extremely low power, so they do not generate any type of electromagnetic interference or pollution. The power output involved in this radio communication is less than 1 hundredth of the power emitted by a normal mobile phone.

The signal transmitted by the Control Unit is received by the first luminaire situated along the path memorized during the Control Unit start-up procedure. Each luminaire, being equipped with a transceiver and radio amplifier, will receive and transmit the signal to the next luminaire along the memorized path. All the products of this range fall into the categories defined by European Recommendation ERC/REC 70-03.



TECHNICAL DATA



Power W	• Dimensions (mm) •			Lamp	End-cap	Weight kg
	L	B	H			
1x18	644	110	88	T8	G13	2,9
1x36	1254	110	88	T8	G13	3,7
1x58	1554	110	88	T8	G13	4,0
2x18	644	170	88	T8	G13	3,9
2x36	1254	170	88	T8	G13	4,7
2x58	1554	170	88	T8	G13	5,1

ACCESSORIES - to be ordered separately

Code	Description	Battery
14810	1X AT EMERGENCY END-CAP	NiCd 4,8V 0,75Ah
14811	2X AT EMERGENCY END-CAP	NiCd 4,8V 0,75Ah
14812	1X LG EMERGENCY END-CAP	NiCd 4,8V 0,75Ah
14813	2X LG EMERGENCY END-CAP	NiCd 4,8V 0,75Ah
14814	1X LGFM EMERGENCY END-CAP	NiCd 4,8V 0,75Ah
14815	2X LGFM EMERGENCY END-CAP	NiCd 4,8V 0,75Ah

EMERGENCY END-CAP: AT - LOGICA - LOGICA FM

Acciaio Beghelli

W	Order code	Description	Consumption	Reflector	IP degree	Pcs/pack.
1x18	14800	ACCIAIO T8 118W	18 W	Semidiffondente	IP66	2
1x36	14802	ACCIAIO T8 136W	36 W	Semidiffondente	IP66	2
1x58	14804	ACCIAIO T8 158W	58 W	Semidiffondente	IP66	2
2x18	14801	ACCIAIO T8 218W	36 W	Semidiffondente	IP66	2
2x36	14803	ACCIAIO T8 236W	70 W	Semidiffondente	IP66	2
2x58	14805	ACCIAIO T8 258W	95 W	Semidiffondente	IP66	2

Certifications

ENEC 03: European quality mark

GRUPPO BEGHELLI

www.beghelli.com

BEGHELLI S.p.A. - Via Mozzeghine, 13/15 - 40050 Monteveglio (BO) - Italy - Tel. 051 9660411 - Fax 051 9660444